

aaa...

uhhh...

umm...

Activities for curious gallery visitors.

This pack has been made
with John Hansard Gallery.
asweetsea is part of Voices
in the Gallery a research
project funded by the Arts &
Humanities Research
Council.

How to use this pack...

Use these prompts in any order.
Start with what is most interesting.
Stop when you decide.

You can mix things up...

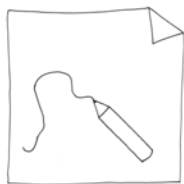
make something you see
or
draw something you hear

You can use these in any space.

Use the stuff you have.

Enjoy it.

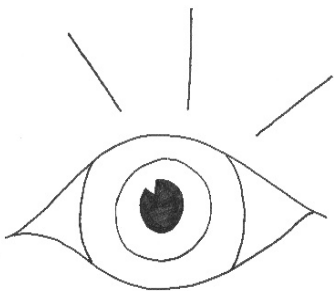
Draw



what

you

see



Record

what

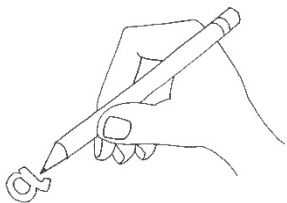


you

hear



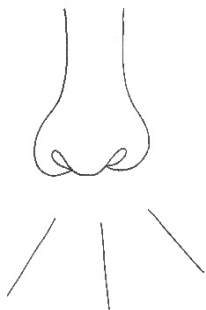
List



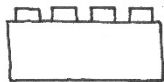
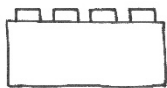
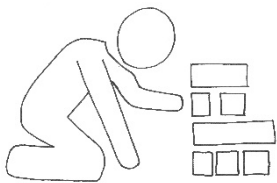
what

you

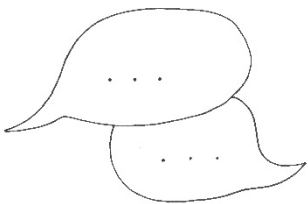
smell



Play with stuff



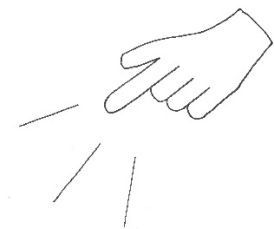
Talk



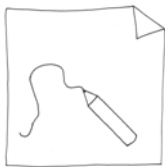
about

how it

feels



Write or draw a
picture about
today on the
front.



Write your address here:

Give this to the gallery visitor desk
and they will post it for you.

www.jhg.art

www.voicesinthegallery.com

Created by Vanessa Rolf in collaboration with pupils and staff
at
Newlands Primary School, Southampton,
Liza Sylvestre, Sarah Hayden and JHG Engagement &
Learning.

Images: Liza Sylvestre, *asweetsea*, installation view,
John Hansard Gallery, 2022. Courtesy the artist. Photo: Reece
Straw

**John
Hansard
Gallery**



**University of
Southampton**



Supported using public funding by
**ARTS COUNCIL
ENGLAND**



**Arts and
Humanities
Research Council**