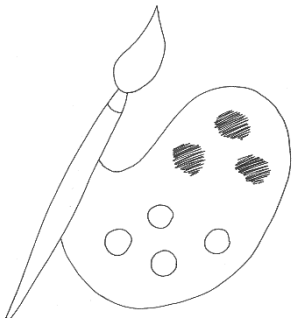


Meet
the
artist



Hello, Liza Sylvestre.

Liza is an artist.

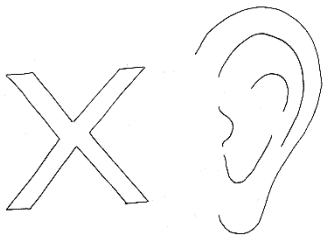


She lives with her family in the United States of America.



Liza is deaf.

Liza started to lose her hearing when she was 6 years old.



Liza wears a cochlear implant.

Liza first started wearing a cochlear implant when she was 20 years old.



A cochlear implant is an electronic device that helps someone who is deaf hear sounds.

Liza lip reads.

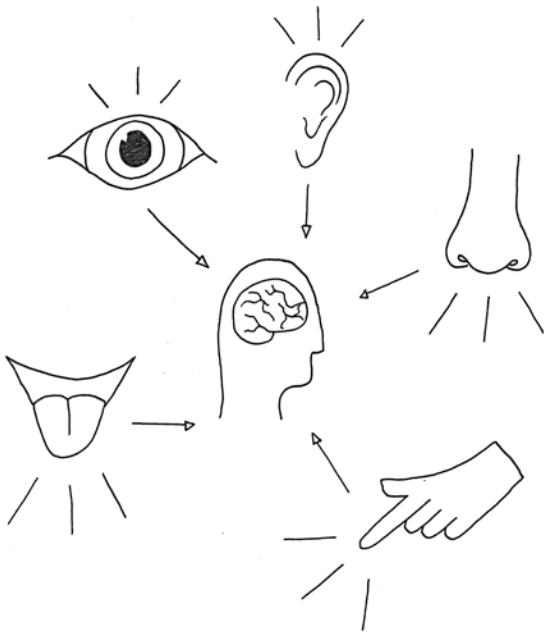


She uses
American Sign Language.

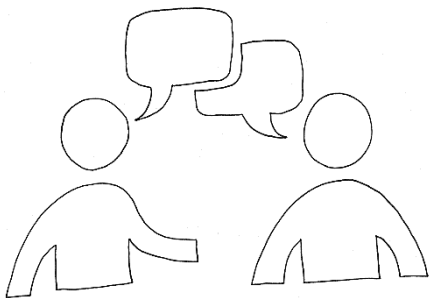


Liza makes art that asks questions.

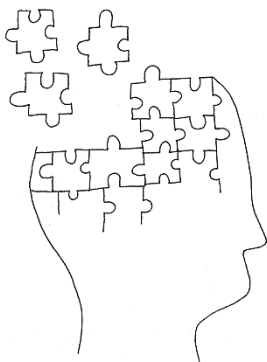
How do our senses collect information about our world?

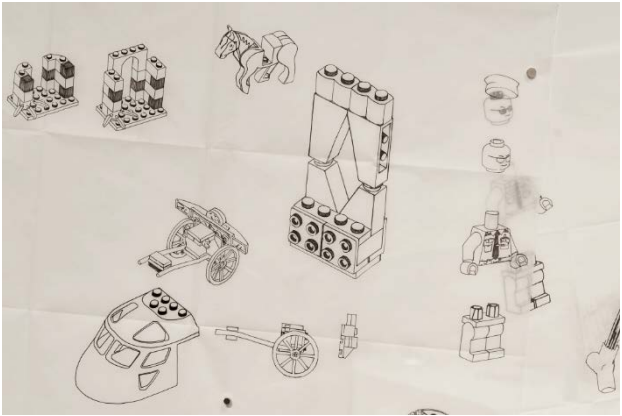


How do we communicate?



How
do we
make
memories?





Liza has made **drawings**,
like the instructions in a Lego kit.



Liza remembers a **film** she watched before she lost her hearing.

With the help of her 6 year old child, who can hear, Liza has recreated the film to fit their description.



Liza has made **sculptures** using 3D printers; combining toys with cochlear implants.

This pack has been made with
John Hansard Gallery.
asweetsea is part of
Voices in the Gallery, a research
project funded by the
Arts & Humanities Research
Council.

www.jhg.art

www.voicesinthegallery.com

Created by Vanessa Rolf in collaboration with pupils and staff at
Newlands Primary School, Southampton,
Liza Sylvestre, Sarah Hayden and JHG Engagement & Learning.

Images: Liza Sylvestre, *asweetsea*, installation view,
John Hansard Gallery, 2022. Courtesy the artist. Photo: Reece Straw

**John
Hansard
Gallery**

 **University of
Southampton**



Supported using public funding by
**ARTS COUNCIL
ENGLAND**



**Arts and
Humanities
Research Council**