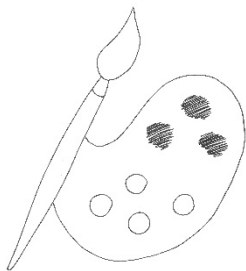


Meet  
the  
artist



Hello, Liza Sylvestre.

Liza is an artist.

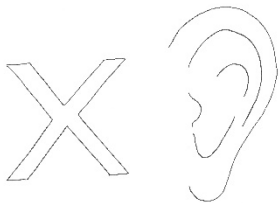


She lives with her family in the United States of America.



Liza is deaf.

Liza started to lose her hearing when she was 6-years-old.



Liza wears a cochlear implant.

Liza first started wearing a cochlea implant when she was 20-years-old.

A cochlear implant is an electronic device that helps someone who is deaf hear sounds.



Liza lip-reads.

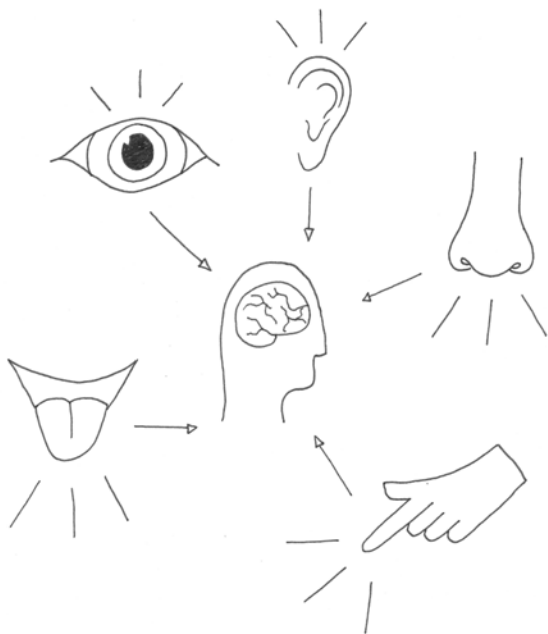


She uses  
American Sign Language.

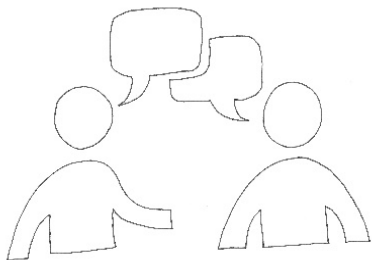


Liza makes art that asks questions.

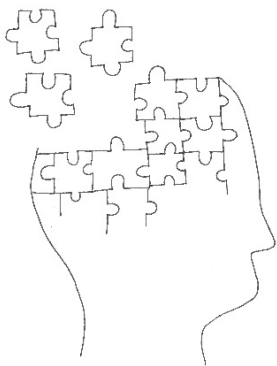
How do our senses  
collect information about  
our world?

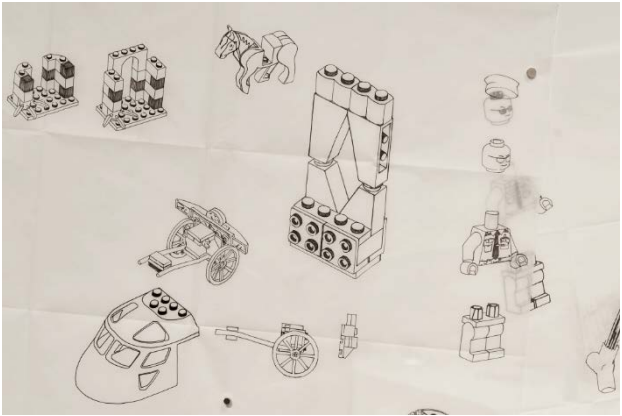


How do we communicate?



How  
do we make  
memories?





Liza has made **drawings**,  
like the instructions in a Lego kit.





Liza remembers a **film** she watched before she lost her hearing. With the help of her 6-year-old child who can hear, Liza has recreated the film to fit their description.



Liza has made **sculptures** using 3D printers; combining toys with cochlear implants.

This pack has been made with John Hansard Gallery. *asweetsea* is part of Voices in the Gallery a research project funded by the Arts & Humanities Research Council.

[www.jhg.art](http://www.jhg.art)

[www.voicesinthegallery.com](http://www.voicesinthegallery.com)

Created by Vanessa Rolf in collaboration with pupils and staff at Newlands Primary School, Southampton, Liza Sylvestre, Sarah Hayden and JHG Engagement & Learning.

Images: Liza Sylvestre, *asweetsea*, installation view, John Hansard Gallery, 2022. Courtesy the artist. Photo: Reece Straw

**John  
Hansard  
Gallery**



University of  
**Southampton**



Supported using public funding by  
**ARTS COUNCIL  
ENGLAND**



Arts and  
Humanities  
Research Council